



Gorleston, Norfolk

Guide Price £500,000

- Detached Bungalow in Highly Sought After Location
- Principal Bedroom with Open Plan Ensuite
- Outbuilding with Power and Lights
- Short Walking Distance to Beach Front
- Ample Parking Via Driveway
- EPC - E
- Extended and Renovated Throughout
- Maintained and Enclosed Rear Garden

Bately Avenue, Gorleston

Gorleston-on-Sea is a charming seaside town on the Norfolk coast. Known for its wide, sandy beach and traditional promenade, Gorleston offers a relaxed coastal atmosphere with stunning cliff-top gardens, a bustling harbour, and a welcoming town centre. It blends classic seaside appeal with a strong sense of community, making it a favourite with both locals and visitors. The area features family-friendly attractions, independent shops, and cosy cafés, all within easy reach of scenic coastal walks and maritime heritage site



Council Tax Band: C



DESCRIPTION

This beautifully renovated and substantially extended detached bungalow is set in the highly desirable Gorleston Cliffs area, just moments from the seafront. Finished to an exceptional standard throughout, the property offers flexible living with two or three spacious double bedrooms, complemented by immaculate landscaped gardens, a large driveway, and an insulated garage with an electric roller door. The standout principal bedroom features a stunning open-plan en-suite complete with a freestanding bath, double sinks, and a stylish, contemporary finish. Additional highlights include hard wiring to the living room, bedrooms, dining room and outbuilding with USB sockets, a sleek modern wet room, a high-end fitted kitchen with integrated appliances and a Rangemaster cooker, a bright front lounge, and a versatile dining/reception room that can easily be reconfigured to create a hallway and third bedroom if required. A rare opportunity in a prime coastal location

LIVING AREAS

The living areas in this home are both stylish and adaptable, designed to suit a range of lifestyles. At the front of the property, the main lounge offers a warm and inviting space, featuring oak wood flooring, a charming original tiled fireplace, and a large double glazed window with a fitted vertical blind that allows plenty of natural light to fill the room. Just off the lounge, the second reception room, currently used as a dining area continues the same quality finish with oak flooring, a radiator, built-in double wardrobes, and another front-facing window. This room offers potential to easily become a generous third double bedroom. A door from here leads into the inner hall, connecting the living spaces smoothly and making the layout both practical and versatile

KITCHEN

The kitchen is a true heart of the home, both practical and beautifully designed. As you step inside, you're greeted by sleek tiled flooring and an extensive range of matching wall and base units, all topped with polished granite worktops that add a touch of luxury. An inset sink with a modern mixer tap sits beneath a rear-facing double glazed window, offering a pleasant view over the garden. Every detail has been carefully considered, from the clever carousel corner units to the integrated fridge and freezer that keep the space streamlined and efficient. A dedicated recess houses the impressive Rangemaster cooker range, complete with a matching Rangemaster extractor above, perfect for anyone who loves to cook. Inset ceiling spotlights provide a clean, modern finish, while a contemporary vertical radiator adds both warmth and style. A side door gives easy access to the garden, and a built-in storage cupboard neatly conceals the gas boiler, keeping everything organised and out of sight

BEDROOMS

The bedrooms in this home offer a perfect blend of comfort, style, and thoughtful design. The principal bedroom is a standout feature, with solid oak wood flooring, dual column-style radiators, and double glazed windows to the side and rear, both fitted with slatted blinds. It includes an extensive, mirror-fronted triple wardrobe and is lit by two ceiling light points, creating a bright and spacious feel. This room flows seamlessly into an impressive open-plan en-suite area, featuring his and hers wash basins with chrome mixer taps, storage cabinets

beneath, and hands-free illuminated mirrors. A luxurious freestanding bath with chrome mixer tap and shower attachment sits as the centrepiece, leading through to a separate WC area with oak flooring, low-level toilet, fitted shelving, and hanging hooks. The second bedroom is equally well-presented, hard wood flooring, a rear-facing double glazed window offering views over the garden, a radiator, and hard-wired internet, ideal for guests or as a dedicated home office

WET ROOM

The shower room is stylishly finished and thoughtfully designed for both comfort and function. It features stone-tiled flooring and a sleek, low-level WC, complemented by a modern wash hand basin with a mixer tap and built-in drawer storage beneath. An opaque PVC double glazed window provides natural light while maintaining privacy. The spacious shower area includes a luxurious rainforest-style overhead mains shower, perfect for a refreshing start to the day. Additional touches such as a heated towel rail, a heated and illuminated mirror, and an extractor fan complete this contemporary space.

OUTSIDE & GARAGE

This property features a spacious shingle driveway, offering ample parking for multiple vehicles, including larger options like caravans, campervans and boats. The driveway is bordered with vibrant flower and shrub beds, enhancing the property's curb appeal. Strategically placed courtesy lighting ensures visibility and safety during evening hours. The driveway leads directly to a garage equipped with an electric roller door, internal lighting, power supply, and a pedestrian access door at the rear. The garage's roof is both boarded and insulated, offering additional storage options.

At the rear, a timber gate provides access from the front of the property. An Italian porcelain pathway, known for its durability and resistance to weather conditions, leads to a paved patio seating area. Adjacent to this is a shingled border adorned with various flowering shrubs, all enclosed by timber fencing supported by concrete posts. The area is well-lit with courtesy lighting and features an outdoor water tap for convenience. Beyond the patio, a lawned garden area extends to the rear of the property, complemented by additional flower borders. A large timber garden shed/workshop offers versatile space for storage or hobbies. To the left, an enclosed garden area features a shingle and stepping stone pathway leading to the rear, with direct access to the garage. This section is also enhanced with courtesy lighting and raised flower and shrub display borders, creating a serene and functional outdoor space.

Enhancing the garden's versatility, an outbuilding with mains electricity and lighting offers a comfortable retreat throughout the year. This insulated structure is ideal for various uses, such as a home office, hobby room, or relaxation space, providing a seamless blend of indoor comfort and outdoor ambiance. The addition of this summerhouse not only enriches the property's functionality but also adds to its overall appeal

PROPERTY UPGRADES

This property has recently undergone extensive refurbishment, enhancing both its

functionality and aesthetic appeal. Key upgrades include the installation of a damp-proof membrane across all floors and a comprehensive electrical rewire, ensuring modern safety standards. The heating system features a fully serviced Ideal combi boiler, contributing to energy efficiency. The kitchen, updated in 2021, boasts a Howdens design with durable quartz worktops. A new 'Hallmark' composite front door, accompanied by a 5-year guarantee, enhances security and curb appeal. The garage has been improved with a new EPDM roof, backed by a 10-year guarantee, a recently fitted electric roller door, and a new UPVC rear door. Bathroom enhancements include the installation of RAK toilets throughout, USB sockets in the master ensuite, second bedroom, and kitchen, and hardwired electrical systems. Additional improvements feature increased loft insulation, an insulated loft hatch with ladder, 'His and Hers' Hudson Reed matching sinks with touch-free illuminated mirrors in the master ensuite, a Calypso wall-mounted vanity unit with sink and 'Clic Clack' plug in the wet room, a Pebble Grey illuminated wet room mirror with heated demister, and a rain shower. The property is fitted with UPVC windows installed in 2018, and the exterior features a luxurious white Italian porcelain patio. An 18ft x 6ft workshop at the rear provides additional functional space

TENURE
FREEHOLD

OUTGOINGS
Council Tax Band C

VIEWING ARRANGEMENTS

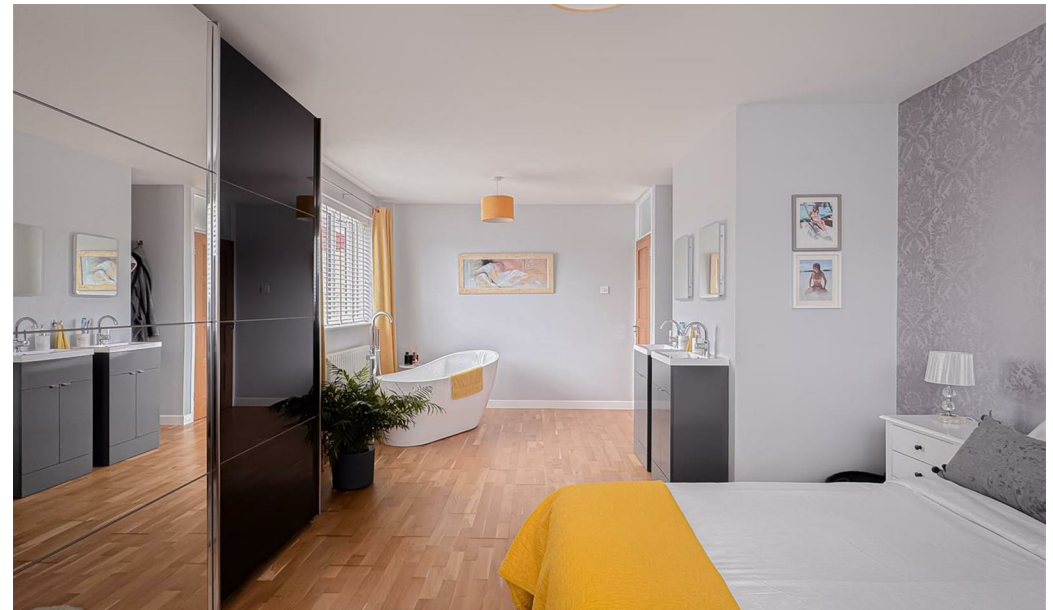
Please contact Flick & Son, 23A, New Market, Beccles, NR34 9HD for an appointment to view.

Email: beccles@flickandson.co.uk

Tel: 01502 442889 Ref: 20891/JD.

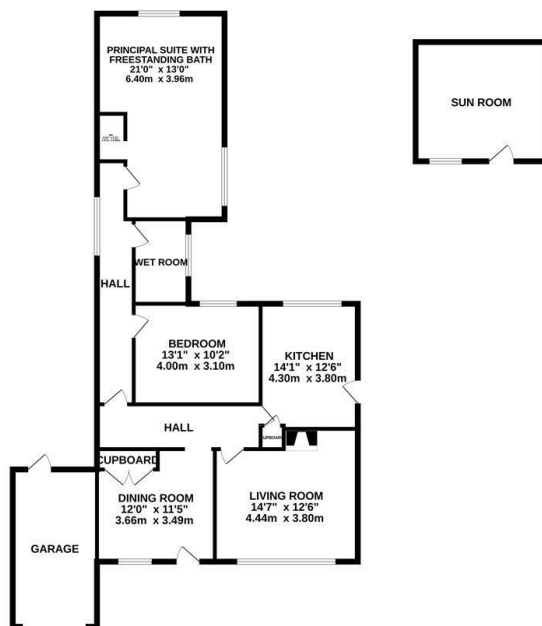
FIXTURES AND FITTINGS

No fixtures, fittings, furnishings or effects save those that are specifically mentioned in these particulars are included in the sale and any item not so noted is expressly excluded. It should not be assumed that any contents, furnishings or furniture shown in the photographs (if any) are included in the sale. These particulars do not constitute any part of any offer or contract. They are issued in good faith but do not constitute representations of fact and should be independently checked by or on behalf of prospective purchasers or tenants and are furnished on the express understanding that neither the agents nor the vendor are or will become liable in respect of their contents. The vendor does not hereby make or give nor do Messrs Flick & Son nor does any Director or employee of Messrs Flick & Son have any authority to make or give any representation or warranty whatsoever, as regards the property or otherwise.

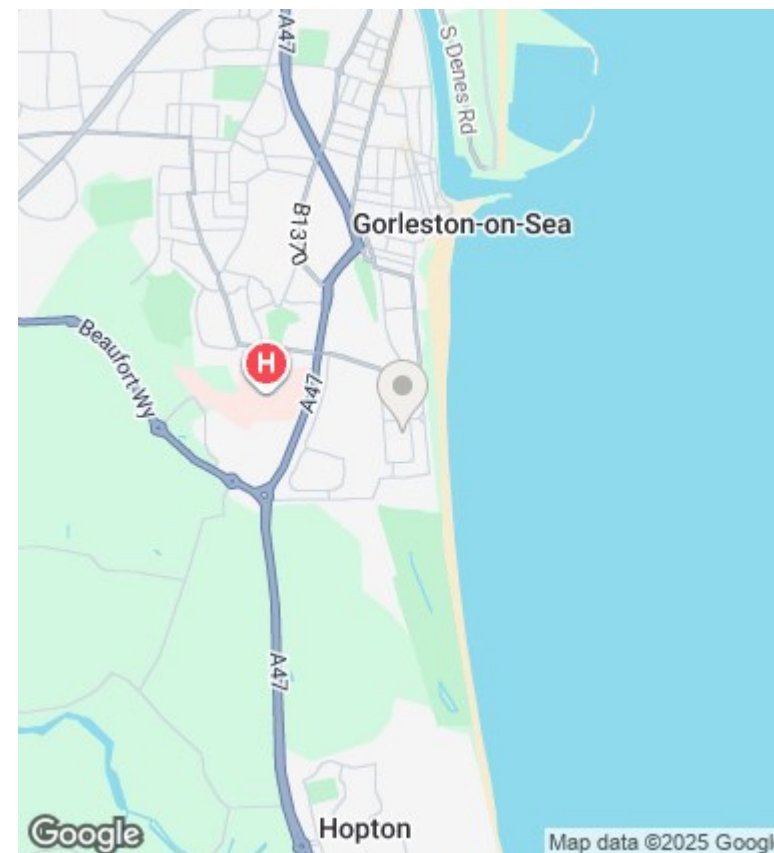




GROUND FLOOR
1343 sq.ft. (124.8 sq.m.) approx.



TOTAL FLOOR AREA: 1343 sq ft. (124.8 sq.m.) approx.
Whilst every attempt has been made to ensure the accuracy of the floorplan, measurements of floors, windows, doors and any other items are approximate and no responsibility is taken for any error, omission or mis-statement. This plan is for illustrative purposes only and should be used as a guide for any prospective purchaser. The services, systems and appliances shown have not been tested and no guarantee as to their operation or efficiency can be given.
Made with floorplan 12025

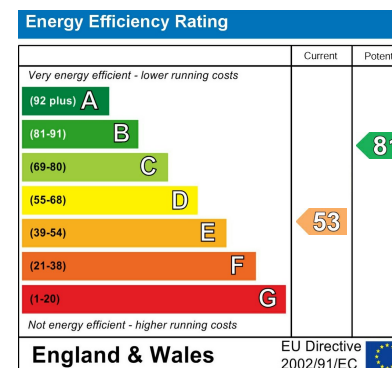


Conveyancing, Surveys & Financial Services

Flick & Son may refer clients to Jigsaw Mortgages Ltd for financial services, Fairweather Law and Stamford Legal for conveyancing and MS Surveys for property surveys. It is the clients decision whether to use these services however if the decision is made to proceed with these services, it should be known that Flick & Son will receive a referral fee of £50 for Jigsaw Mortgages Ltd, £200 fee for Fairweather Law referrals, £150 fee for Stamford Legal referrals, and £50 referral fee for MS Surveys.

Floorplans

These plans are for illustrative purposes only and should not be used for any other purpose by any prospective purchaser or any other party.



Energy Efficiency Rating

The full energy performance certificate can be viewed online at the national EPC register at www.epcregister.com